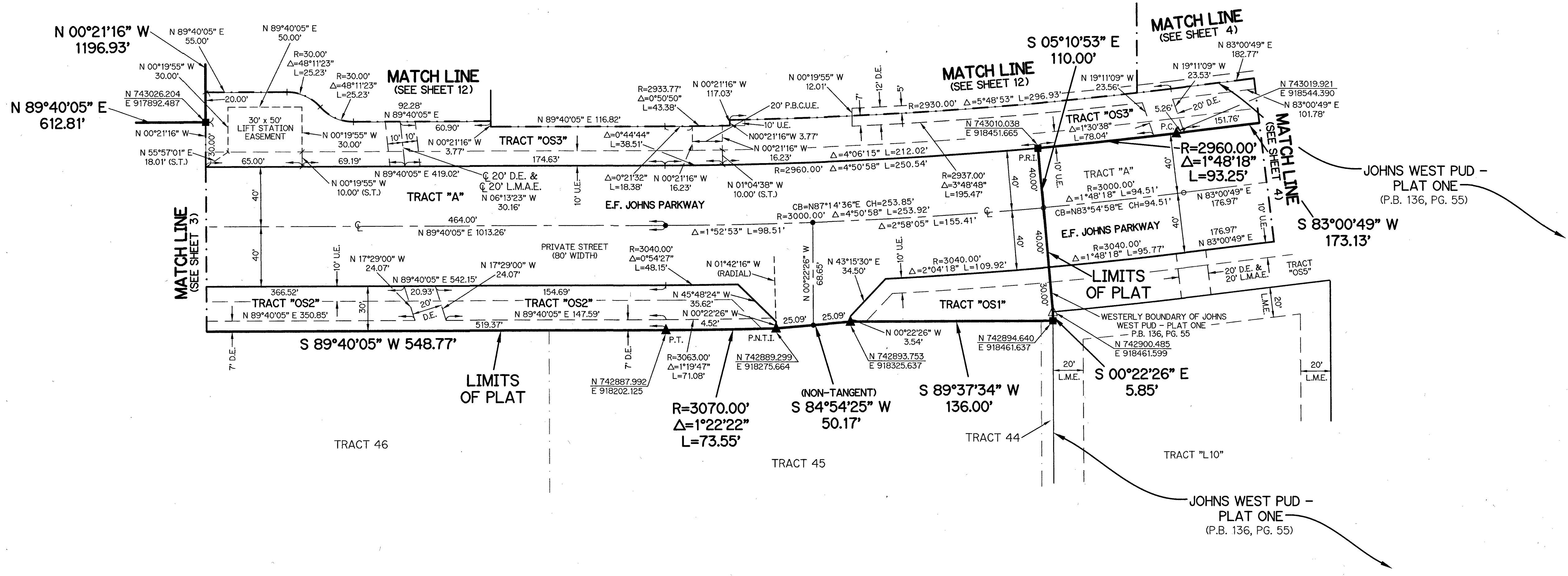
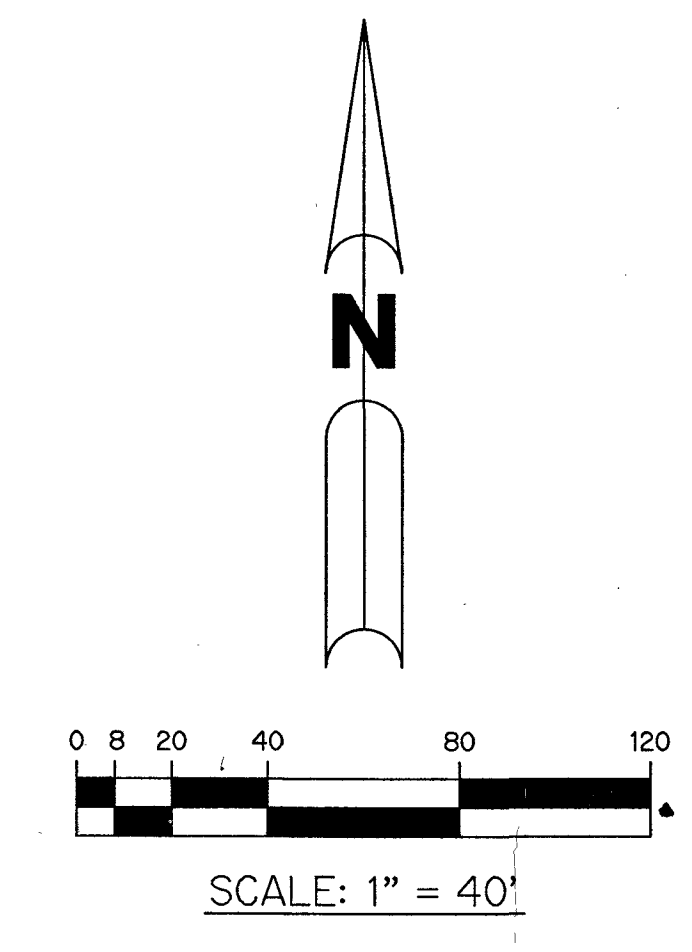


JOHNS PUD (WEST) - PLAT FOUR

BEING A REPLAT OF ALL OF TRACT "L7", JOHNS WEST PUD - PLAT THREE, AS RECORDED IN PLAT BOOK 137, PAGE 91, AND ALL OF TRACT "OS8", JOHNS WEST PUD - PLAT ONE, AS RECORDED IN PLAT BOOK 136, PAGE 55, AND A PORTION OF TRACTS 9 THROUGH 14, TRACTS 17 THROUGH 23 AND TRACTS 44 THROUGH 47, AND A PORTION OF A ROAD, DYKE AND DITCH RESERVATION, 30 FEET IN WIDTH, BLOCK 77, PALM BEACH FARMS COMPANY PLAT NO. 3, AS RECORDED IN PLAT BOOK 2, PAGES 45 THROUGH 54, ALL OF THE PUBLIC RECORDS OF PALM BEACH COUNTY, FLORIDA, LYING IN SECTION 18, TOWNSHIP 47 SOUTH, RANGE 42 EAST

SHEET 2 OF 12



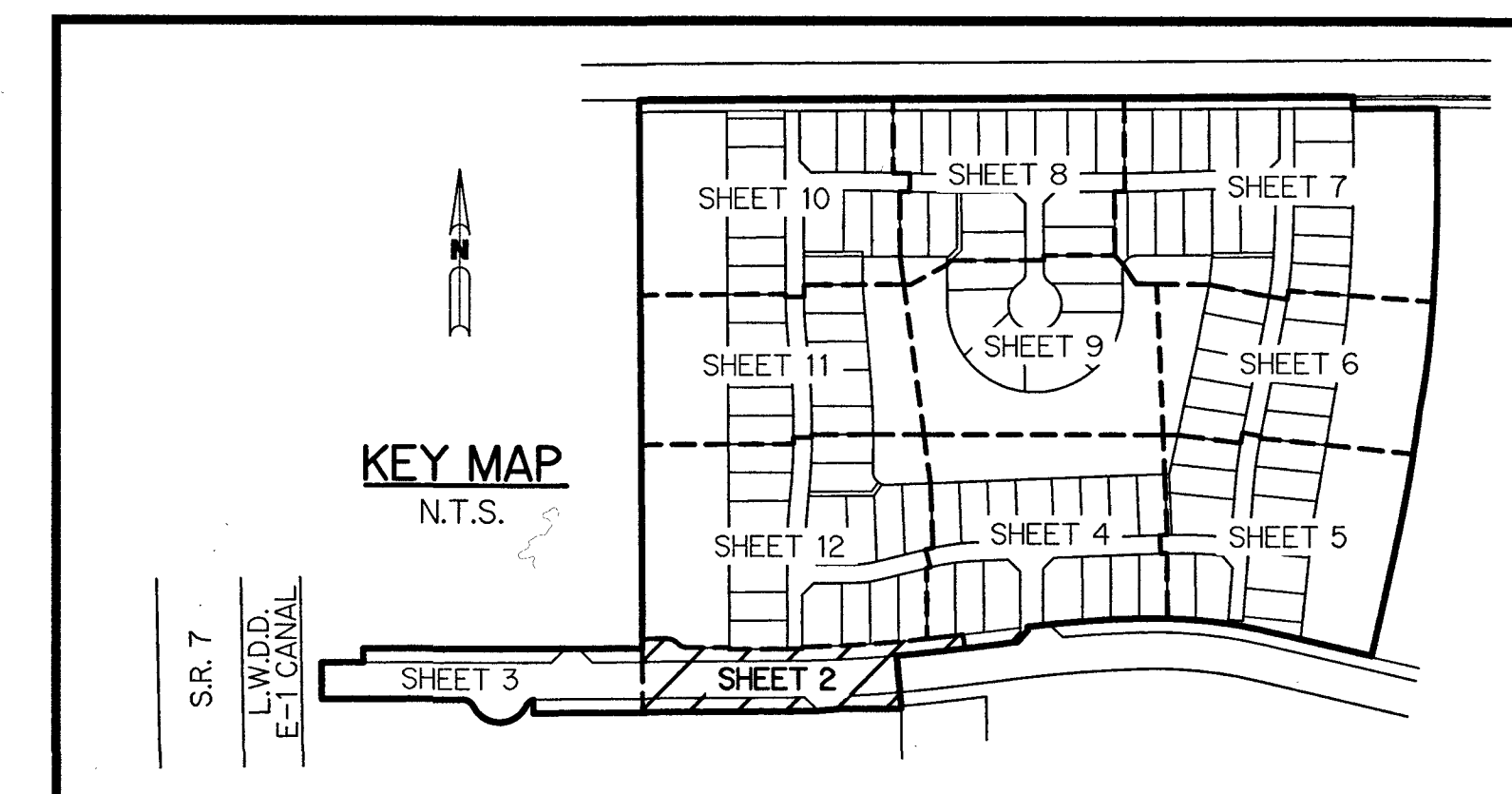
LEGEND:

- ▲ - SET PERMANENT REFERENCE MONUMENT 5/8" IRON ROD 1.5' IN LENGTH 1.4" CAP STAMPED FRM L.B. #7741
- △ - FOUND PERMANENT REFERENCE MONUMENT 5/8" IRON ROD 1.5' IN LENGTH 1.4" CAP STAMPED FRM L.B. #7741
- - SET PERMANENT REFERENCE MONUMENT 4"x4" CONCRETE MONUMENT WITH 1.5" DISK STAMPED FRM L.B. #7741
- - FOUND PERMANENT REFERENCE MONUMENT 4"x4" CONCRETE MONUMENT WITH 1.5" DISK STAMPED FRM L.B. #7741
- - SET PERMANENT CONTROL POINT NAIL WITH 1.25" DISK STAMPED PGP L.B. #7741
- - FOUND PERMANENT CONTROL POINT NAIL WITH 1.25" DISK STAMPED PGP L.B. #7741
- AGR - AGRICULTURAL
- Δ - DELTA ANGLE
- B.E. - BUFFER EASEMENT
- BLK - BLOCK
- CB - CHORD BEARING
- CH - CHORD DISTANCE
- CL - CENTERLINE
- D.B. - DEED BOOK
- D.E. - PRIVATE DRAINAGE EASEMENT
- ESMT - EASEMENT
- F.P.L. - FLORIDA POWER & LIGHT
- L - ARC LENGTH
- L.A.E. - LIMITED ACCESS EASEMENT
- LB - LICENSED BUSINESS
- L.M.A.E. - LAKE MAINTENANCE ACCESS EASEMENT
- L.M.E. - LAKE MAINTENANCE EASEMENT
- L.W.D.D. - LAKE WORTH DRAINAGE DISTRICT
- N.R. - NOT RADIAL
- NR.T.R. - NOT RADIAL TO REAR LINE
- N.T. - NON-TANGENT
- N.T.S. - NOT TO SCALE
- O.R.B. - OFFICIAL RECORD BOOK
- O.E. - MAINTENANCE & ROOF OVERHANG EASEMENT
- P.B.C. - PALM BEACH COUNTY
- P.B.C.U.E. - PALM BEACH COUNTY UTILITY EASEMENT
- P.B. - PLAT BOOK
- P.C. - POINT OF CURVATURE
- P.C.C. - POINT OF COMPOUND CURVATURE
- P.C.P. - PERMANENT CONTROL POINT
- P.D.E. - PUBLIC DRAINAGE EASEMENT
- PG. - PAGE
- PGS. - PAGES
- P.O.B. - POINT OF BEGINNING
- P.O.N.I. - POINT OF NON-RADIAL INTERSECTION
- P.N.T.I. - POINT OF NON-TANGENT INTERSECTION
- P.O.C. - POINT OF COMMENCEMENT
- P.O.I. - POINT OF INTERSECTION
- P.R.C. - POINT OF REVERSE CURVATURE
- P.R.I. - POINT OF RADIAL INTERSECTION
- P.S.M. - PROFESSIONAL SURVEYOR AND MAPPER
- P.T. - POINT OF TANGENCY
- PUD - PLANNED UNIT DEVELOPMENT
- R - RADIUS
- RAD - RADIAL
- R/W - RIGHT-OF-WAY
- R.D. & D. - ROAD, DYKE AND DITCH RESERVATION
- SIRC - SET 5/8" IRON ROD & CAP STAMPED "FRM LB7741"
- SN&D - SET MAGNETIC NAIL & DISK STAMPED "FRM LB7741"
- S.T. - SURVEY TIE
- TYP. - TYPICAL
- U.E. - UTILITY EASEMENT
- N=780000.00 STATE PLANE COORDINATE VALUE
- E=930900.00

NOTES:

COORDINATES SHOWN ARE GRID COORDINATES DATUM = NAD 83 (1990 ADJUSTMENT)
 ZONE = FLORIDA EAST ZONE
 LINEAR UNIT = U.S. SURVEY FEET
 COORDINATE SYSTEM = 1983 STATE PLANE TRANSVERSE MERCATOR PROJECTION
 ALL DISTANCES ARE GROUND (UNLESS OTHERWISE NOTED)
 SCALE FACTOR = 1.0000209
 PLAT BEARING = GRID BEARING
 GROUND DISTANCE X SCALE FACTOR = GRID DISTANCE

THIS INSTRUMENT WAS PREPARED BY
 PERRY C. WHITE, P.S.M. 4213, STATE OF FLORIDA
 SAND & HILLS SURVEYING, INC.
 8461 LAKE WORTH ROAD, SUITE 410
 LAKE WORTH, FLORIDA 33467
 LB-7741



JOHNS PUD (WEST) - PLAT FOUR

SH0345

SHEET 2 OF 12